

# ***Dorothy Shaw***



## ***Jazz Fusion Compositions***

# ***Dorothy Shaw***

## ***Jazz Fusion Compositions***

<i>Page</i>	<i>Title</i>
2	Blue Funk
4	The Catch
6	Moonfly
7	Scheveningen (a beach in Holland)
9	Song for Nelson Mandela
10	Set It Free
11	Song with No Name
12	To Where the Birds Fly
13	Vento nas Folhas (Wind in the Leaves)
16	Yes!

*All compositions © Dorothy Shaw*

# BLUE FUNK

STRAIGHT FUNK ♩ = 100

DOROTHY SHAW

## INTRO

BASS + PNO (OCTAVES)

PNO + CYMBAL  $E^b_9$

5 PNO PATTERN  $C_9$   $F_9$   $B^b_9$   $E^b_9$  + CYMBAL

BASS SIM. TO ABOVE  
DRUMS FUNK PATTERN

## HEAD

9 ALTO SAX  $C_9$   $F_9$   $B^b_9$   $E^b_9$   $C_9$   $F_9$   $B^b_9$   $E^b_9$

CRESC.  
RHYTHM SECTION SIM.

13  $C_9$   $F_9$   $B^b_9$   $E^b_9$   $C_9$   $F_9$   $B^b_9$   $E^b_9$

CRESC. RHYTHM TACET RHYTHM HITS

17  $E/D/C$   $D/C/B^b$   $D/C/F$   $C/B^b/E^b$

PNO + BASS:  
DRUMS FUNK PATTERN

19  $C/B^b/A^b$   $B^b/A^b/G^b$   $FMA7^{\#11}$   
 DRUM HITS AS PNO + BASS

21  $E/D/C$   $D/C/B^b$   $D/C/F$   $C/B^b/E^b$   
 DRUM PATTERN

23  $C/B^b/A^b$   $B^b/A^b/G^b$   $D7^{\#9}$   $G7^{\#9b13}$   
 DRUM HITS

26  $C-9$   $F9$   $B^b-9$   $E^b9$   $C-9$   $F9$  **To CODA**  
 DRUM PATTERN RHYTHM TACET

**D.S. FOR SOLOS**  
**LAST HEAD AL CODA** **CODA**  
 29  $B^b-9$   $E^b9$   $B^b-9$   $E^b9$   $B^b-9$   $E^b9$   $B^b-9$   $E^b9$  **UNISON**  
 RHYTHM HITS RHYTHM HITS

# CONCERT OUTLINE

## THE CATCH

DOROTHY SHAW

### INTRO

STRAIGHT FUNK

ALTO SAX

CHORD RHYTHM: F<sup>-11</sup> G<sup>-11</sup> A<sup>b</sup>MAT<sup>9</sup> B<sup>b</sup>MAT<sup>9</sup> C<sup>b</sup>MAT<sup>9</sup> 3x

BASS

(PATTERN 1) (PATTERN 2)

### A HEAD

A. SAX.

4 RHYTHM TACET CHORD RHYTHM AS INTRO F<sup>-11</sup> G<sup>-11</sup> A<sup>b</sup>MAT<sup>9</sup> B<sup>b</sup>MAT<sup>9</sup>

BASS

PATTERN 1 AS INTRO

A. SAX.

7 F<sup>-11</sup> G<sup>-11</sup> A<sup>b</sup>MAT<sup>9</sup> B<sup>b</sup>MAT<sup>9</sup> F<sup>-11</sup> G<sup>-11</sup> A<sup>b</sup>MAT<sup>9</sup> B<sup>b</sup>MAT<sup>9</sup>

BASS

A. SAX.

11 1. C<sup>b</sup>MAT<sup>9</sup> 2. F<sup>b</sup>MAT<sup>9</sup>

BASS

PATTERN 2 AS INTRO

COPYRIGHT © 1998 DOROTHY SHAW

**B**

15  $D^b_{\text{MAJ}}7\#11$   $E^b_{\text{MAJ}}9$   $B^b11$   $C11$   $D^b_{\text{MAJ}}7\#11$   $E^b_{\text{MAJ}}9$   $B^b11$   $A11$

A. SAX.

BASS

SIM. TO PATTERN 1

19  $A^b_{\text{MAJ}}7\#11$   $C_{\text{MAJ}}9$

A. SAX.

BASS

CRES...  
SIM. TO PATTERN 2

CRES...

23 (D.S.)

A. SAX.

BASS

1. RHYTHM TACET

2. RHYTHM TACET

# MOONFLY

STRAIGHT 85 ♩ = 70

DOROTHY SHAW

PIANO RIFF - INTRO REP AD LIB

PIANO

PNO.

PNO.

PNO.

PNO.

PNO.

COPYRIGHT © DOROTHY SHAW 2009

# SCHEVENINGEN

DOROTHY SHAW

LIGHT FUNK ♩ = 93

ALTO SAXOPHONE

♩ F<sup>MAJ</sup>7 F<sup>-MAJ</sup>7 F<sup>MAJ</sup>7

4 F<sup>-MAJ</sup>7 F<sup>MAJ</sup>7 Bb7#11 D<sup>MAJ</sup>9 D<sup>-9</sup> G<sup>9</sup>

9 A<sup>-7</sup> Ab<sup>MAJ</sup>7 Db<sup>MAJ</sup>7 Eb<sup>MAJ</sup>7 F<sup>MAJ</sup>7 1. Db<sup>MAJ</sup>7

13 2. Db<sup>MAJ</sup>7 Dø F<sup>-MAJ</sup>7 Bb7#11 Eb<sup>MAJ</sup>7 Dø G7b13 C<sup>MAJ</sup>7

18 Dø F<sup>-MAJ</sup>7 Eø A7b5 Dø G7#9 D.S. AL 3 3. Db<sup>MAJ</sup>7

COPYRIGHT © DOROTHY SHAW 1991



# SONG FOR NELSON MANDELA

AFRICAN FEEL STRAIGHT QUAVERS ♩ = 190

DOROTHY SHAW

## INTRO

PIANO

5

PED.

9 **A** B<sub>-9</sub> B<sub>-11</sub>

PNO.

13 A/B C<sub>MAJ</sub>7/B B<sub>-11</sub>

PNO.

17 **B** D<sub>11</sub>

PNO.

19 G<sub>MAJ</sub>7/D

PNO.

COPYRIGHT © DOROTHY SHAW 1983

21 **D<sup>11</sup>**

PNO.

23 **G<sub>MAJ</sub>7/D**

PNO.

25 **B<sub>b</sub>MAJ7#11/D**

PNO.

27 **A/D**

PNO.

29 **1. D<sub>MAJ</sub>9**

PNO.

31 **2. B-11** **A/B** **D.S. FOR SOLOS**

PNO.

## CONCERT

## SET IT FREE

DOROTHY SHAW

A BRAZILIAN FEEL ♩ = 178

A/D

A-/D

E/D

G-<sup>b</sup>/D

BASS

1.

A/D

A-/D

E/D

G-<sup>b</sup>/D

2.

A/D

A-/D

E/D

G-<sup>b</sup>/D

B C#-11

C<sup>9</sup>#11

17 B-11

Bb7#11

21 A-<sup>9</sup>B-<sup>9</sup>

E-7

F#-7

A-<sup>9</sup>B-<sup>9</sup>CMAT<sup>9</sup>

25 A/D

A-/D

E/D

G-<sup>b</sup>/D

COPYRIGHT © DOROTHY SHAW 1991

# SONG WITH NO NAME

FLOATY FEEL ♩ = 292

DOROTHY SHAW

**INTRO**  $B^b_{-11}$

BASS 1/5/5:

PIANO  $p$

*CRESC....*

*DIM.....*

5  $B^b_{-11}$   $G^b_{-13}^*$

$p$

PIANO/BASS SIM.

*CRESC.....*

*MP*

9  $B^b_{-11}$   $G^b_{-13}^*$

(PNO VOICING)  $B^b_{-11}$  PNO AS INTRO

*DIM....*

*CRESC.....*

*DIM...*

1.

14  $B^b_{-11}$   $DMAJ^{13\#11}$   $B^b_{-11}$

*CRESC.* (PNO VOICING)  $MF$  (SIM.) SUBITO  $p$

2.

18  $DMAJ^{13\#11}$   $G^b_{-9}/E^b$

$MF$  *CRESC....*

22  $G^b_{-9}/A^b$   $AMAJ^9\#11$   $B^b_{-11}$

$F$  *DIM....*  $p$  *CRESC....*

26

*DIM....*

COPYRIGHT © DOROTHY SHAW 1991

# TO WHERE THE BIRDS FLY

STRAIGHT 8s ♩ = 140

DOROTHY SHAW

INTRO C-7 G-7b6 AbMAJ7 FADD9



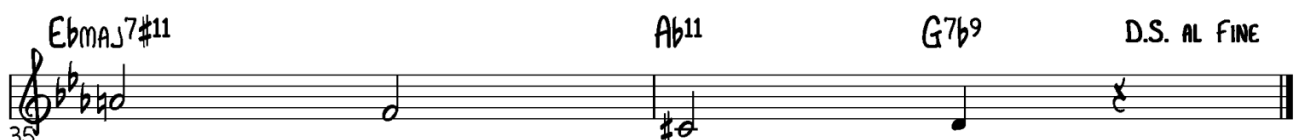
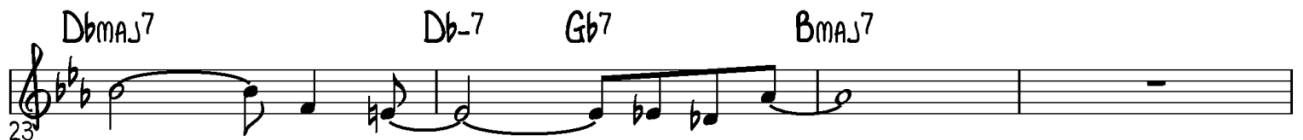
BOSSA NOVA  
C-11



STRAIGHT 8s C-7 G-7b6 AbMAJ7 FADD9 1.& 3. C-7 G-7b6 AbMAJ7 FADD9 FINE



BOSSA NOVA 12.



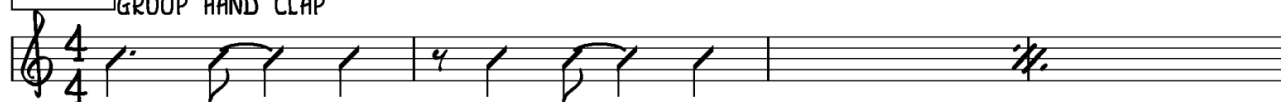
# VENTO NAS FOLHAS

MARACATU / SAMBA DE RODA ♩ = 200

DOROTHY SHAW

## INTRO

GROUP HAND CLAP

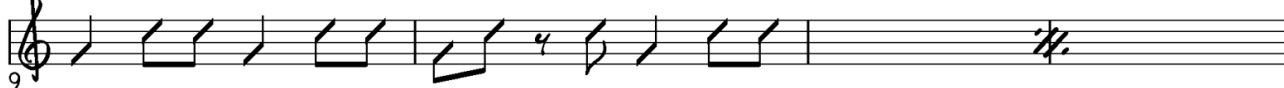


+ CAXIXI SIMILE

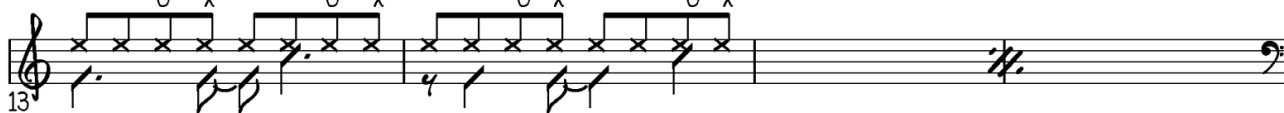


+ AGOGO

CLAP TACET



+ DRUM KIT



+ BASS

CAXIXI TACET



+ PIANO



AGOGO TACET



**(A)** GUITAR (SUSTAIN ACOUSTIC SOUND)



PIANO, BASS, DRUMS SIMILE



41  $F_{-11}$

45  $FMAJ^{6-9}$

PIANO SAME NOTES AS GUITAR BUT PATTERN AS ABOVE

49  $F\sharp_{-11}$  GUITAR & PNO PLAY SAME PATTERN (PNO 8VB):

53  $FMAJ^{9\sharp 11}$

57  $E_{-11}$

61  $E\flat MAJ^{9\sharp 11}$

65  $D_{-11}$

69  $D\flat MAJ^{9\sharp 11}$

73  $FMAJ^{6-9}$

PIANO AS AT A, BASS, DRUMS SIMILE

CONT'D OVER...

**(B)**  $A\flat MAJ^9\#11$  PIANO / GUITAR (LOCO)

81

$G^{11}$

85

$G\flat MAJ^9\#11$

89

$F^{11}$

93

$E MAJ^9\#11$  PIANO / GUITAR (PNO 8VB)

97

$E\flat^{11}$

101

$E/A$   $D/G$

105

$F\#^{11}$

109

$F MAJ^9\#11$

113 *SUBITO mp* *DIM.....*

$\oplus$   $F MAJ^6_9$

121 (REP. RANDOMLY AT DIFFERENT REGISTERS & FADE)

RHYTHM TACET (CYMBALS, CHIMES, ETC TO FADE)



# YES!

STRAIGHT 8S LATIN FEEL ♩ = 208

DOROTHY SHAW

Chords and notes for the first staff:

- Staff 1: 6/4 time. Notes: C4, D4, E4, F4, G4, A4, Bb4, C5. Chords: Eb9, F9, G7, C-, Bb7, Abmaj7, G7b13.

Chords and notes for the second staff:

- Staff 2: 4/4 time. Notes: C4, D4, E4, F4, G4, A4, Bb4, C5. Chords: F9, C6-9.

Chords and notes for the third staff:

- Staff 3: 7/8 time. Notes: C4, D4, E4, F4, G4, A4, Bb4, C5. Chords: F-9, G-9, Abmaj9, Bbmaj9, F-9, G-9, Abmaj9.

Chords and notes for the fourth staff:

- Staff 4: 4/4 time. Notes: C4, D4, E4, F4, G4, A4, Bb4, C5. Chords: Fmaj9, Dbmaj7, Ebmaj7, Bb11, C11.

Chords and notes for the fifth staff:

- Staff 5: 4/4 time. Notes: C4, D4, E4, F4, G4, A4, Bb4, C5. Chords: Ab/Db, Eb7, F9, G7b13, Bb11, C UNISON.